



SPARK ELECTRIC

ILLUSTRATED PARTS MANUAL

Issue 1 March 2007



Bowman Leisure Karts Ltd,
Laburnham Farm, Chiltern Green Road, Peters Green Bedfordshire LU2 9PW
TEL +44(0)1438 831130 • FAX +44 (0) 1438 831131
www.bowman-karts.com



SPARK ELECTRIC

ITEM	PART NO.	DESCRIPTION
1	CAES01	Painted bare chassis
2	CAES01A	Roll hoop for safety harness
3	CAES01B	Roll hoop support bar
5	CAC04	Floor panel
6	CAC05	Bumper rubber
7	CAC08	Front bumper cover
8	CAC09	Front bumper
9	CAC10	Rear bumper
10	CAC11	Left side wrap
11	CAC12	Right side wrap
12	CAC15	Number panel
13	CAC17	Number panel brackets

For list of fixings see rear page



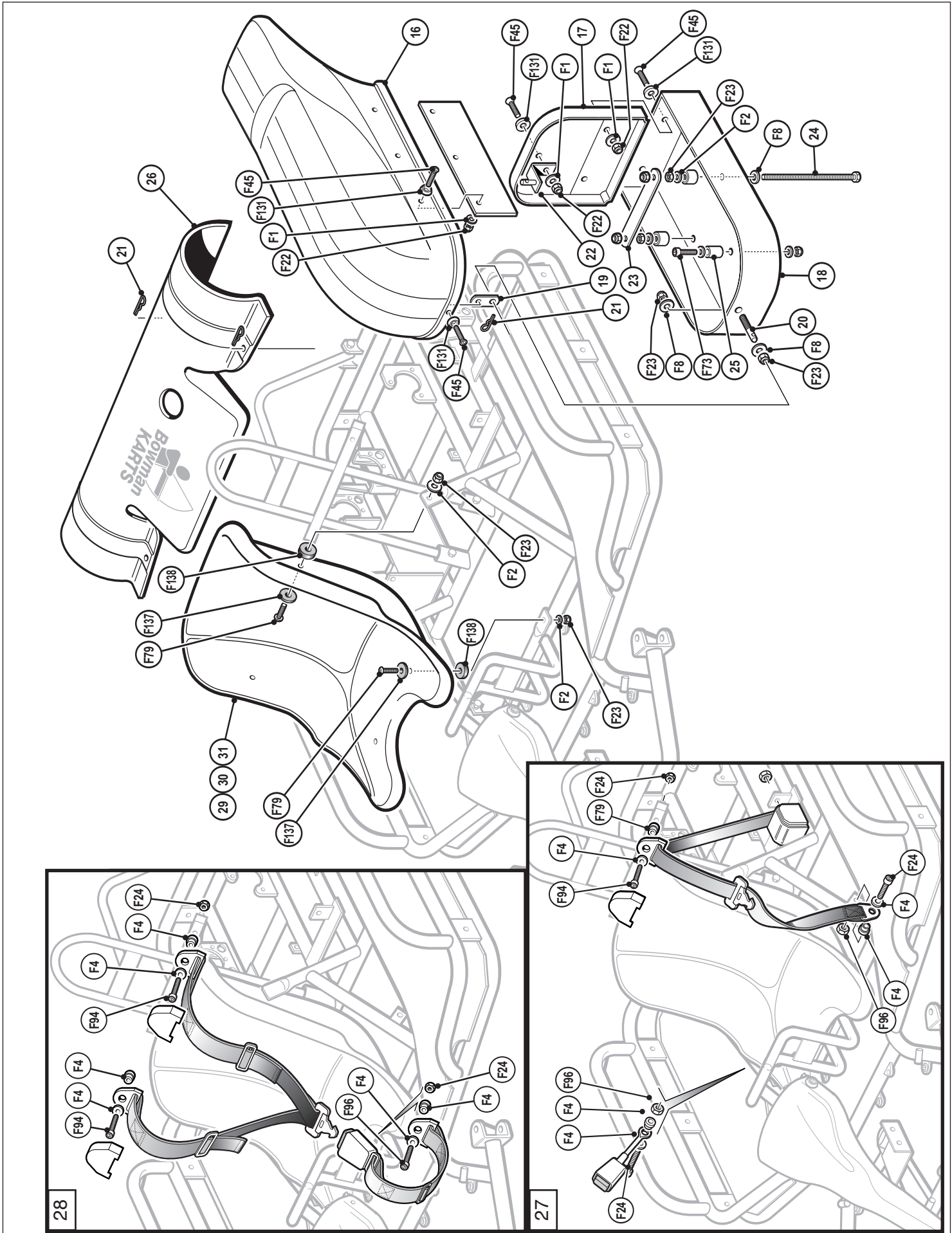
SPARK ELECTRIC

ITEM	PART NO.	DESCRIPTION
16	CAC21	Top sidepod cover
17	CAC22	Sidepod backplate
18	CAC23	Lower shroud
19	CAC20	Sidepod front steel clip
20	CAC25	R clip stud
21	CAC26	SP8 clip
22	CAC27	Top pod bracket
23	CAES23	Battery strap
24	CAES24	Battery retaining stud
25	CAES25	Nylon stop
26	CAES05	Engine cover
27	CAC29	Lap & diagonal safety harness
28	CAC29A3	3 Way safety harness
29	CAC32	Plastic seat S/MS/ML
30	CAC33	Fully upholstered seat S/MS/ML
31	CAC34	1/4 upholstered S/MS/ML

For list of fixings see rear page



SPARK ELECTRIC





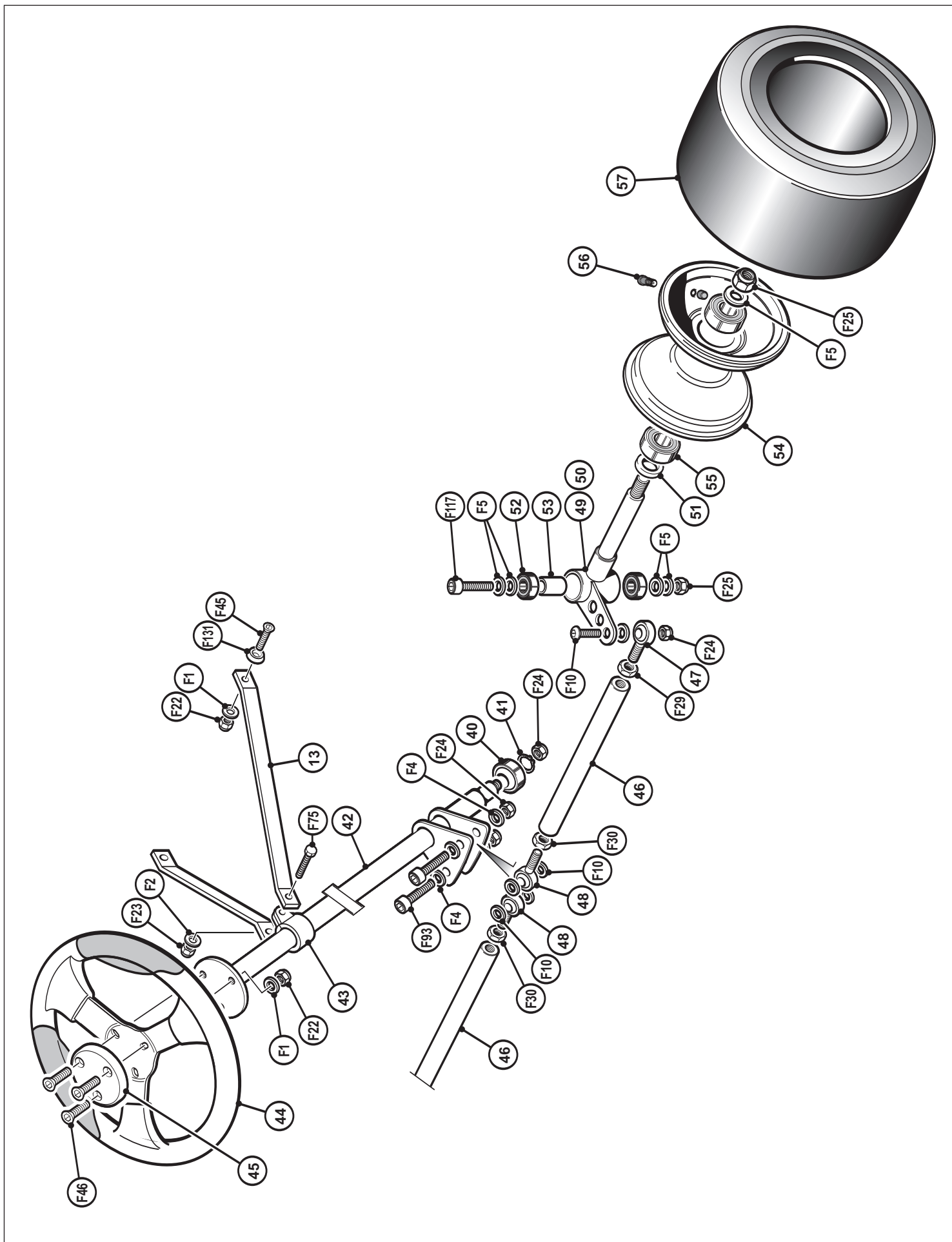
SPARK ELECTRIC

ITEM	PART NO.	DESCRIPTION
40	CAS02	Spherical seal 10mm
41	CAS03	Spherical clip
42	CAS04	Heavy duty steering column
43	CAS05	Plastic steering bush
44	CAS06	Steering wheel
45	CAS07	Wheel boss
46	CAS08	Nylon track arm
47	CAS09	10mm rod end right hand
48	CAS10	10mm rod end left hand
49	CAS16	Left stub axle
50	CAS17	Right stub axle
51	CAS18	Alloy wheel spacer
52	CAS19	Axle seal 6201
53	CAS20	Axle bearing spacer
54	CAS28	Oke front wheel rim
55	CAS31	Axle seal 6203
56	CAS39	Tyre valve
57	CAS47	Front tyre

For list of fixings see rear page



SPARK ELECTRIC





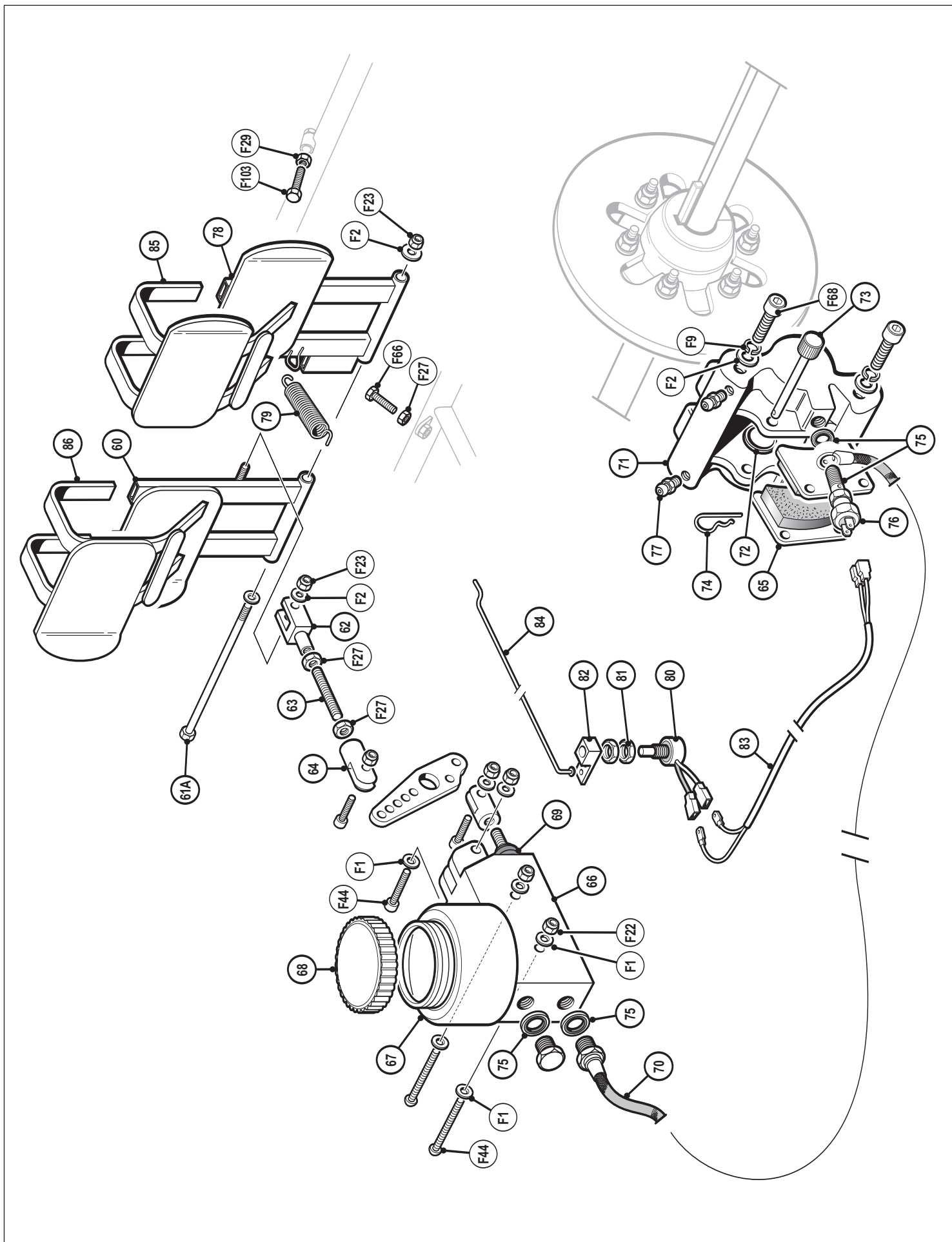
SPARK ELECTRIC

ITEM	PART NO.	DESCRIPTION
60	CABS01	Brake pedal
61	CABS02	Pedal flip down
62	CABS04	Pedal clevis
63	CABS05	Pedal clevis stud
64	CABS06	Master cylinder clevis
65	CABS15	Brake pads
66	CABS16	Master cylinder
67	CABS16A	Reservoir
68	CABS16B	Cylinder cap
69	CABS16C	Master cylinder seal kit
70	CABS17	Armoured brake line
71	CABS18	Brake caliper
72	CABS18A	Brake caliper seal kit
73	CABS19	Pad pin
74	CAC26	SP8 clip
75	CABS20	Banjo seal
76	CABS21A	Brake switch
77	CABS26	Bleed nipple
78	CATS01	Throttle pedal
79	CATS02	Throttle pedal spring
80	CAES39	Potentiometer
81	CAES39A	Potentiometer seal nut
82	CAES40	Potentiometer clamp
83	CAES41	Potentiometer brake loom
84	CAES44	Potentiometer linkage
85	CATS01B	Throttle Pedal Extension
86	CABS01B	Brake Pedal Extension

For list of fixings see rear page



SPARK ELECTRIC





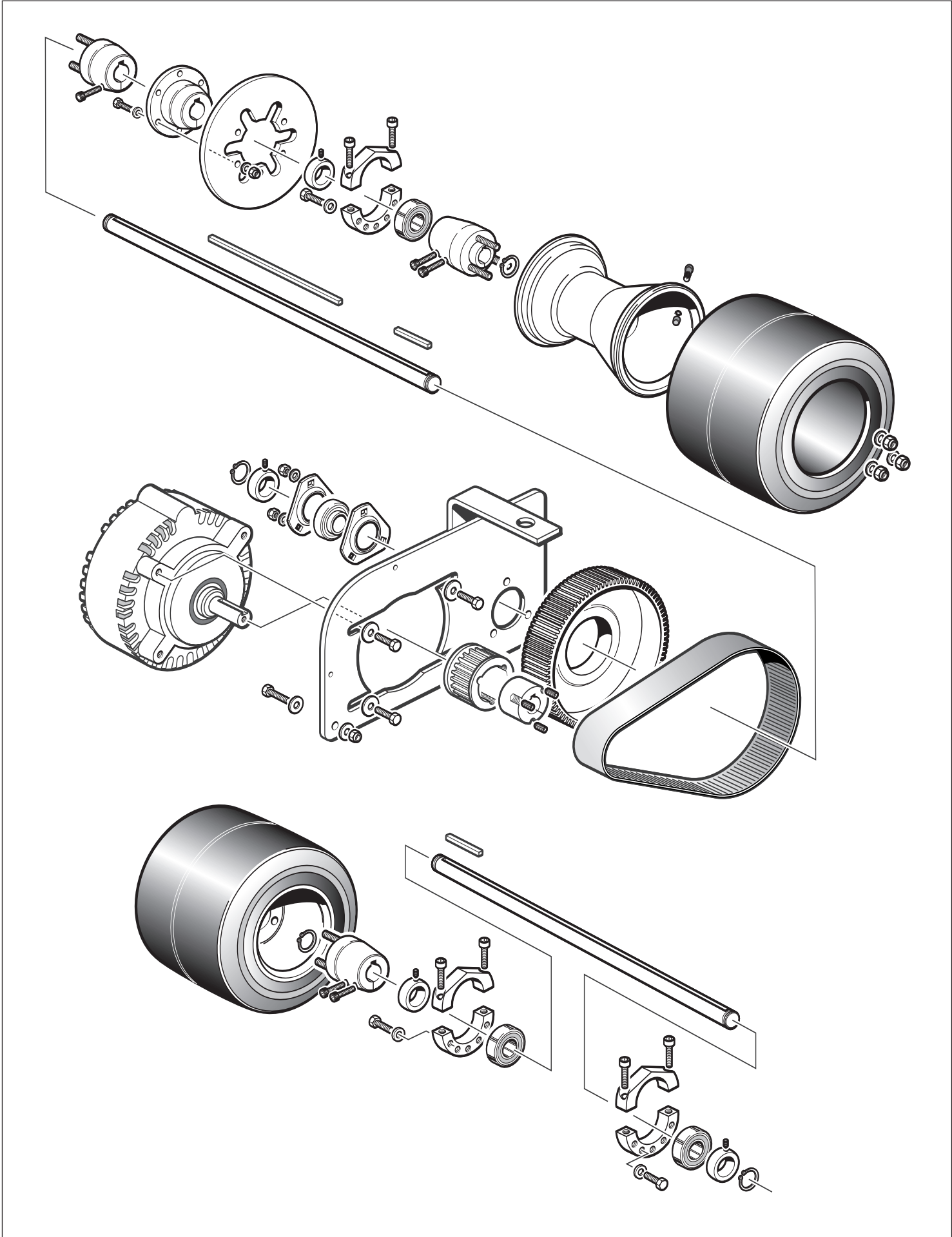
SPARK ELECTRIC

ITEM	PART NO.	DESCRIPTION
100	CAS29	Oke rear wheel rim
101	CAS50	Rear tyre
102	CAS52	Rear axle
103	CAS54	Axle circlips
104	CAS55A	Rear hub twin bolt fixing
105	CAS58	Alloy bearing hangers
106	CAS59	Steel bearing hangers
107	CAS61	Axle seal eccentric collar
108	CAK02	Rear hub keyway
109	CAK03	Sprocket keyway
110	CABS11	A8mm / 19dmm disc
111	CABS12	Disc carrier
112	CAES02	Motor mount plate
113	CAES03	Motor
114	CAES03A	Motor keyway
115	CAES13	840 x 8 x 30 belt
116	CAES14	28t x 8 x 30 front pulley gear
117	CAES15	80t x 8 x 30 rear pulley gear

For list of fixings see rear page



SPARK ELECTRIC





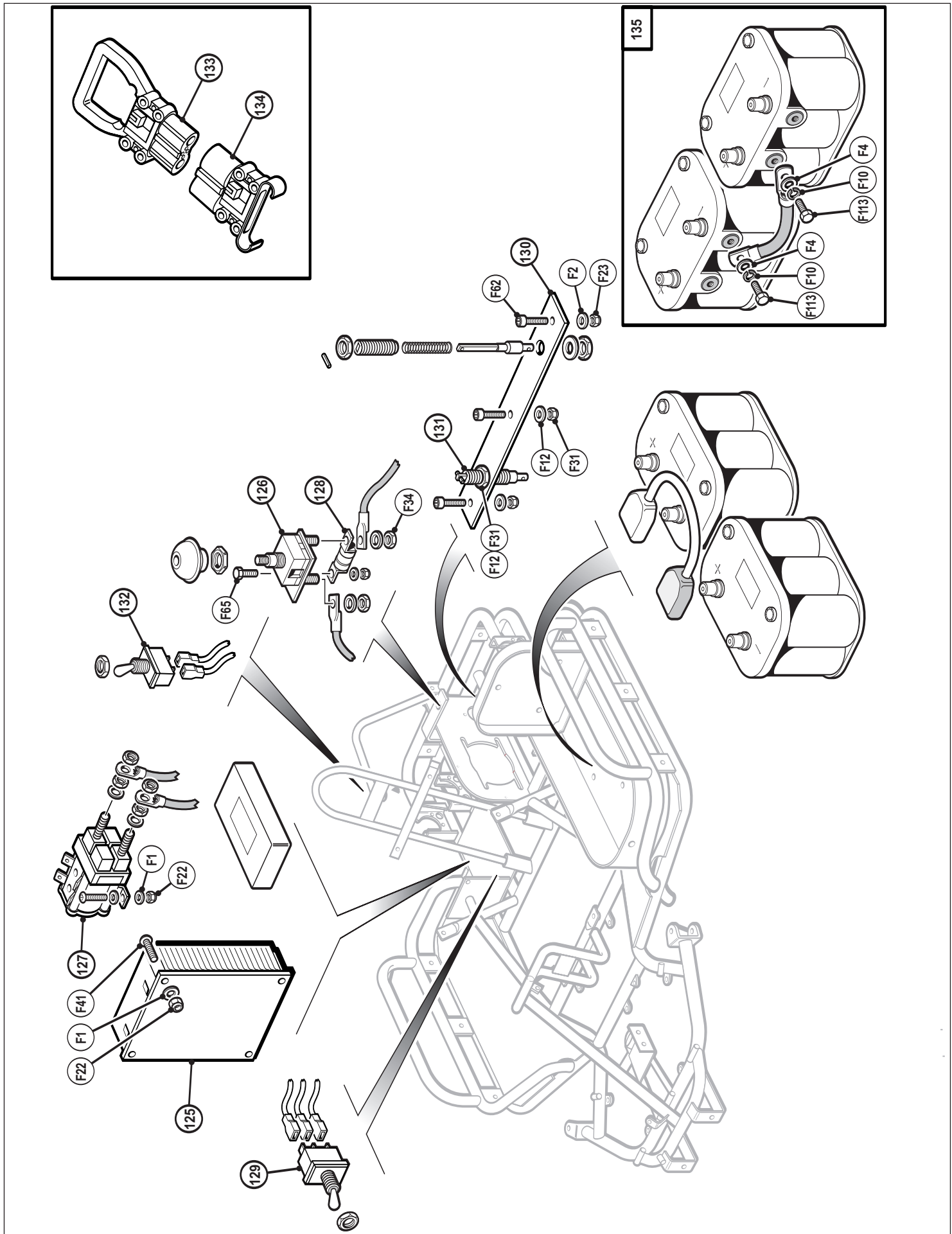
SPARK ELECTRIC

ITEM	PART NO.	DESCRIPTION
125	CAES04	Sevcon controller
126	CAES38	Emergency switch
127	CAES38A	Relay
128	CAES38B	Bussman 125 fuse
129	CAES53	Reverse switch
130	CAES72	Charge stck mount
131	CAES73	Charge sticks
132	CAES92	On/Off flick switch
133	CAES35	Rema charge plug charger
134	CAES36	Rema charge plug kart
135	CAES30	Battery 12v Gel

For list of fixings see rear page



SPARK ELECTRIC





ITEM	DESCRIPTION
F1	M6 form A washer
F2	M8 form A washer
F3	M8 form B washer
F4	M10 form A washer
F5	M12 Form A washer
F6	M12 Form B washer
F7	M6 penny washer
F8	M8 penny washer
F9	M8 spring washer
F10	M10 spring washer
F11	3/8 x 1.25 penny (Briggs)
F12	22mm washer (charge stick/Briggs/barriers)
F22	M6 nyloc
F23	M8 nyloc
F24	M10 nyloc
F25	M12 nyloc
F26	M6 locknut
F27	M8 locknut
F28	M8 locknut Left thread
F29	M10 locknut
F30	M10 locknut Left thread
F31	22mm locknut
F32	M6 locking nut (brake disc)
F33	5/16 UNC lock nut (Briggs terminal)
F34	M8 x 24 hexagon long series (Stop button)
F41	M6 x 20 socket button
F42	M6 x 16 socket button
F43	M6 x 30 socket button
F44	M6 x 45 socket button
F45	M6 x 20 socket c/sk

**ITEM****DESCRIPTION**

F46	M6 x 25 socket c/sk
F47	M6 x 20 hexagon
F48	M6 x 25 hexagon
F49	M5 x 30 hexagon
F50	M6 x 45 hexagon
F62	M8 x 60 socket button
F63	M8 x 20 socket button
F64	M8 x 25 socket button
F65	M8 x 25 hexagon
F66	M8 x 30 hexagon
F67	M8 x 45 hexagon
F68	M8 x 20 socket caphead
F69	M8 x 25 socket caphead
F70	M8 x 35 socket caphead
F71	M8 x 40 socket caphead
F72	M8 x 45 socket caphead
F73	M8 x 50 socket caphead
F74	M8 x 55 socket caphead
F75	M8 x 60 socket caphead
F76	M8 x 80 socket caphead
F77	M8 x 25 socket c/sk
F78	M8 x 30 socket c/sk
F79	M8 x 40 c/sk
F80	M8 x 45 socket c/sk
F81	M8 x 30 hexagon (turned down head)
F90	M10 x 16 socket caphead
F91	M10 x 30 socket caphead
F92	M10 x 40 socket caphead
F93	M10 x 45 socket caphead
F94	M10 x 50 socket caphead



PART NO.	DESCRIPTION
F95	M10 x 60 socket caphead
F96	M10 x 25 socket caphead
F97	7/16 x 1.5 unf socket caphead (Briggs pulley)
F100	M10 x 35 socket button
F101	M10 x 16 hexagon
F102	M10 x 20 hexagon
F103	M10 x 50 hexagon
F104	M10 x 60 hexagon
F105	M10 x 80 hexagon
F109	M10 x 20 socket c/sk
F110	M10 x 25 socket c/sk
F111	M10 x 30 socket c/sk
F112	3/8 x 5/8 unc Briggs motor bolts
F113	3/8 x 5/8 unc battery bolts
F117	M12 x 90 socket caphead
F121	M6 x 8 grubscrew (pot clamp)
F124	M10 x 16 grubscrew
F125	M10 x 20 grub screw
F130	Alloy bush for Briggs motor pulley
F131	M6 plastic c/sk washer
F132	M6 plastic spacer washer
F137	M8 plastic c/sk seat washer
F138	M8 plastic spacer washer
F140	M8 rear bumper T nuts

For list of fixings see rear page