



STORM ELECTRIC

ILLUSTRATED PARTS MANUAL

Issue 1 March 2007



Bowman Leisure Karts Ltd,
Laburnham Farm, Chiltern Green Road, Peters Green Bedfordshire LU2 9PW
TEL +44(0)1438 831130 • FAX +44 (0) 1438 831131
www.bowman-karts.com



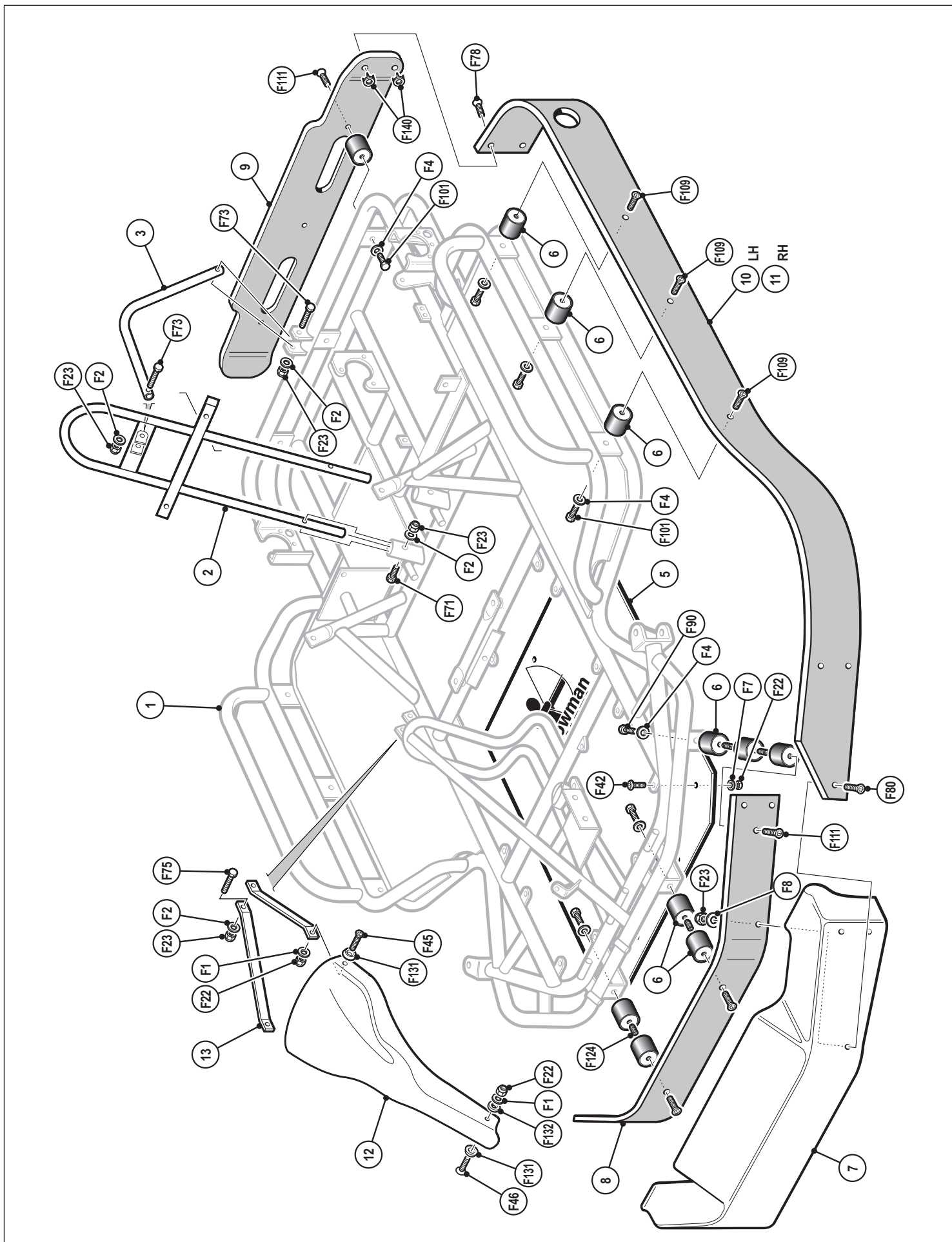
STORM ELECTRIC

| ITEM | PART NO. | DESCRIPTION |
|------|----------|------------------------------|
| 1 | AES01 | Painted bare chassis |
| 2 | AES01A | Roll hoop for safety harness |
| 3 | AES01B | Roll hoop support bar |
| 5 | AC04 | Floor panel |
| 6 | AC05 | Bumper rubber |
| 7 | AC08 | Front bumper cover |
| 8 | AC09 | Front bumper |
| 9 | AC10 | Rear bumper |
| 10 | AC11 | Left side wrap |
| 11 | AC12 | Right side wrap |
| 12 | AC15 | Number panel |
| 13 | AC17 | Number panel brackets |

For list of fixings see rear page



STORM ELECTRIC





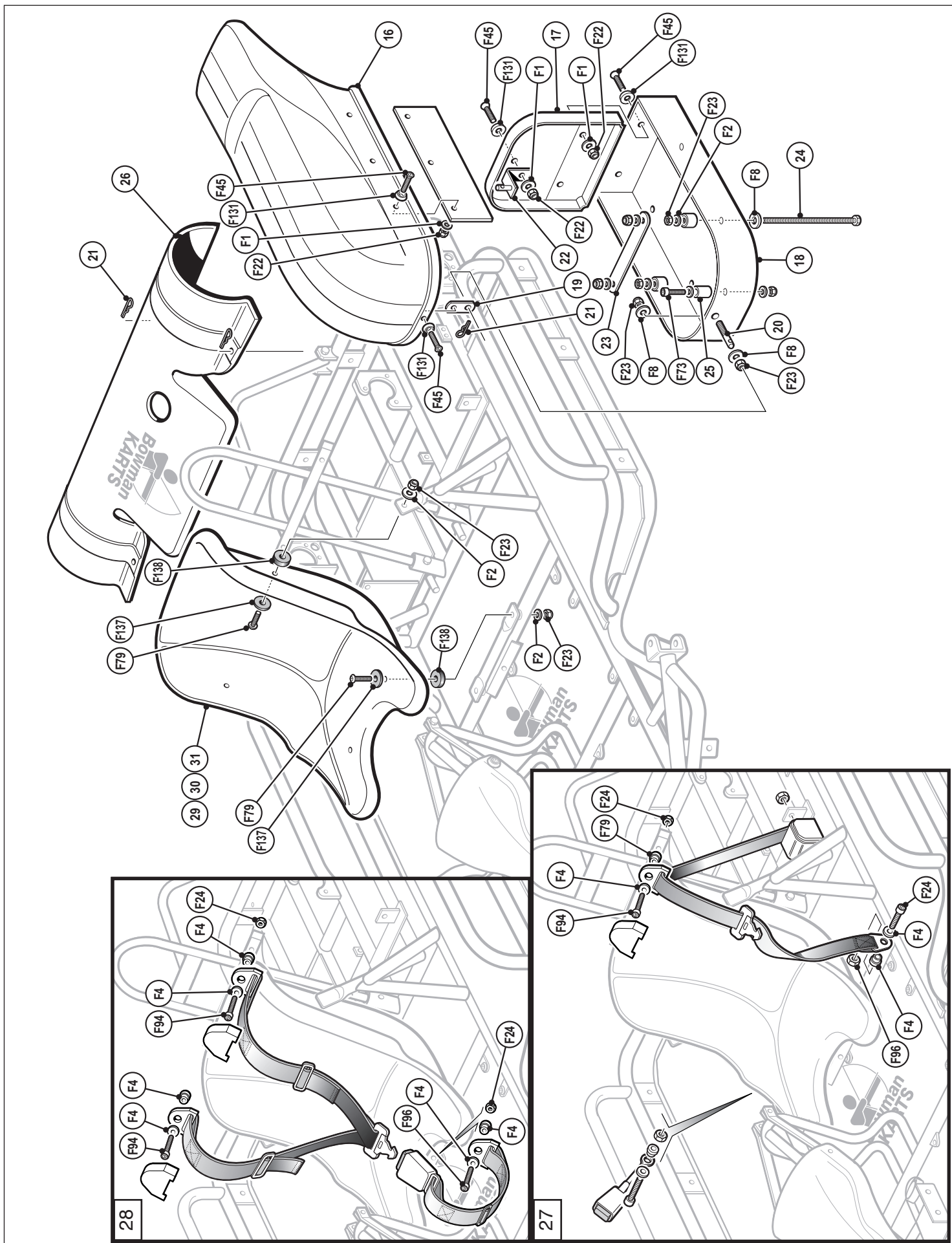
STORM ELECTRIC

| ITEM | PART NO. | DESCRIPTION |
|------|----------|--------------------------------------|
| 16 | AC21 | Top sidepod cover |
| 17 | AC22 | Sidepod backplate |
| 18 | AC23 | Lower shroud |
| 19 | AC20 | Sidepod front steel clip |
| 20 | AC25 | R clip stud |
| 21 | AC26 | SP8 clip |
| 22 | AC27 | Top pod bracket |
| 23 | AES23 | Battery strap |
| 24 | AES24 | Battery retaining stud |
| 25 | AES25 | Nylon stop |
| 26 | AES05 | Engine cover |
| 27 | AC29 | Lap & diagonal safety harness |
| 28 | AC29A3 | Way safety harness |
| 29 | AC32 | Plastic seat L/XL/XXL |
| 30 | AC33 | Fully upholstered seat L/XL/XXL/XXXL |
| 31 | AC34 | 1/4 upholstered L/XL/XXL |

For list of fixings see rear page



STORM ELECTRIC





STORM ELECTRIC

| ITEM | PART NO. | DESCRIPTION |
|------|----------|----------------------------|
| 40 | AS02 | Spherical seal 10mm |
| 41 | AS03 | Spherical clip |
| 42 | AS04 | Heavy duty steering column |
| 43 | AS05 | Plastic steering bush |
| 44 | AS06 | Steering wheel |
| 45 | AS07 | Wheel boss |
| 46 | AS08 | Nylon track arm |
| 47 | AS09 | 10mm rod end right hand |
| 48 | AS10 | 10mm rod end left hand |
| 49 | AS16 | Left stub axle |
| 50 | AS17 | Right stub axle |
| 51 | AS18 | Alloy wheel spacer |
| 52 | AS19 | Axle seal 6201 |
| 53 | AS20 | Axle bearing spacer |
| 54 | AS28 | Oke front wheel rim |
| 55 | AS31 | AWheel seal 6203 |
| 56 | AS39 | Tyre valve |
| 57 | AS47 | Front tyre |

For list of fixings see rear page



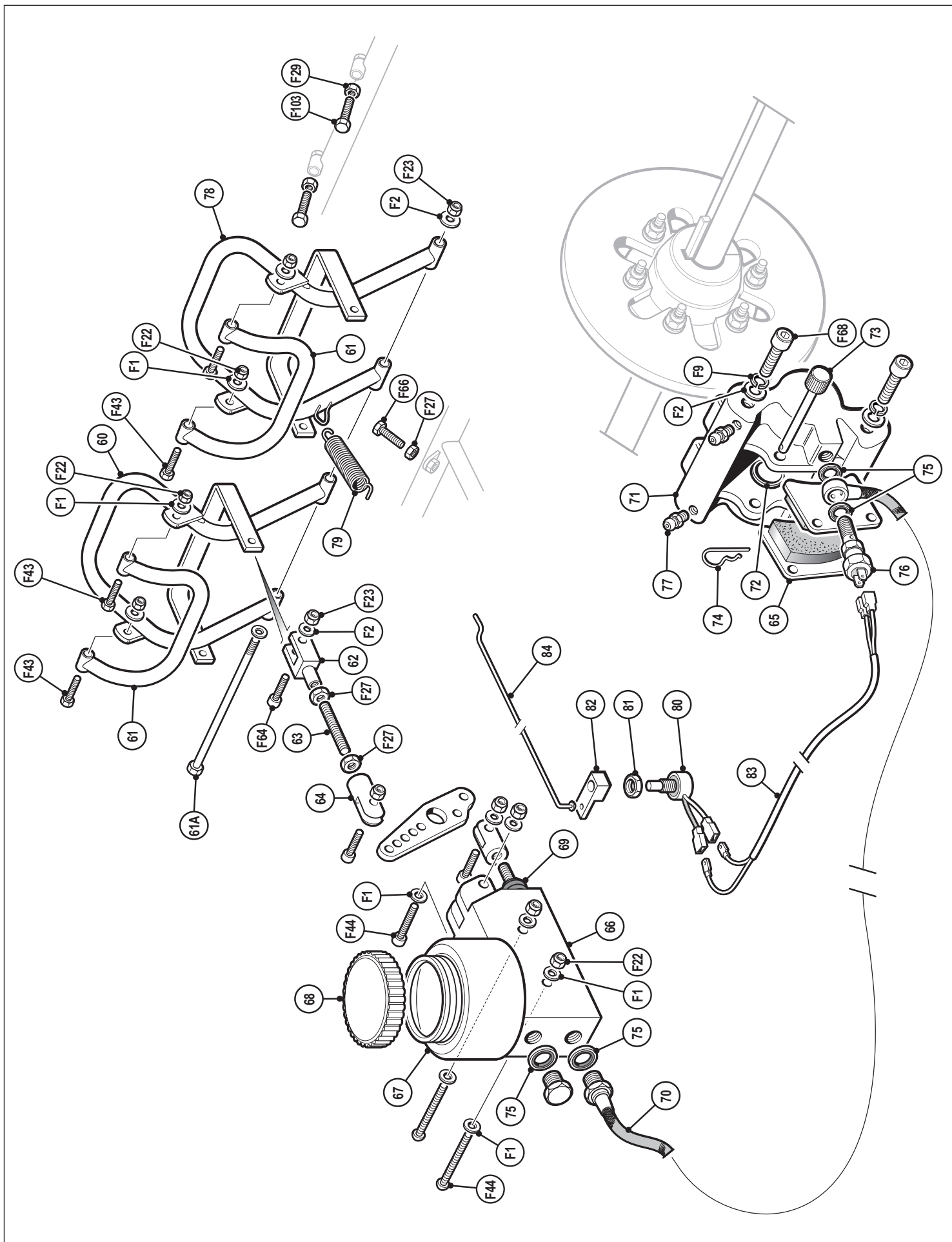
STORM ELECTRIC

| ITEM | PART NO. | DESCRIPTION |
|------|----------|--------------------------|
| 60 | ABS01 | Brake pedal |
| 61 | ABS02 | Pedal flip down |
| 62 | ABS04 | Pedal clevis |
| 63 | ABS05 | Pedal clevis stud |
| 64 | ABS06 | Master cylinder clevis |
| 65 | ABS15 | Brake pads |
| 66 | ABS16 | Master cylinder |
| 67 | ABS16A | Reservoir |
| 68 | ABS16B | Cylinder cap |
| 69 | ABS16C | Master cylinder seal kit |
| 70 | ABS17 | Armoured brake line |
| 71 | ABS18 | Brake caliper |
| 72 | ABS18A | Brake caliper seal kit |
| 73 | ABS19 | Pad pin |
| 74 | AC26 | SP8 clip |
| 75 | ABS20 | Banjo seal |
| 76 | ABS21A | Brake switch |
| 77 | ABS26 | Bleed nipple |
| 78 | ATS01 | Throttle pedal |
| 79 | ATS02 | Throttle pedal spring |
| 80 | AES39 | Potentiometer |
| 81 | AES39A | Potentiometer seal nut |
| 82 | AES40 | Potentiometer clamp |
| 83 | AES41 | Potentiometer brake loom |
| 84 | AES44 | Potentiometer linkage |

For list of fixings see rear page



STORM ELECTRIC





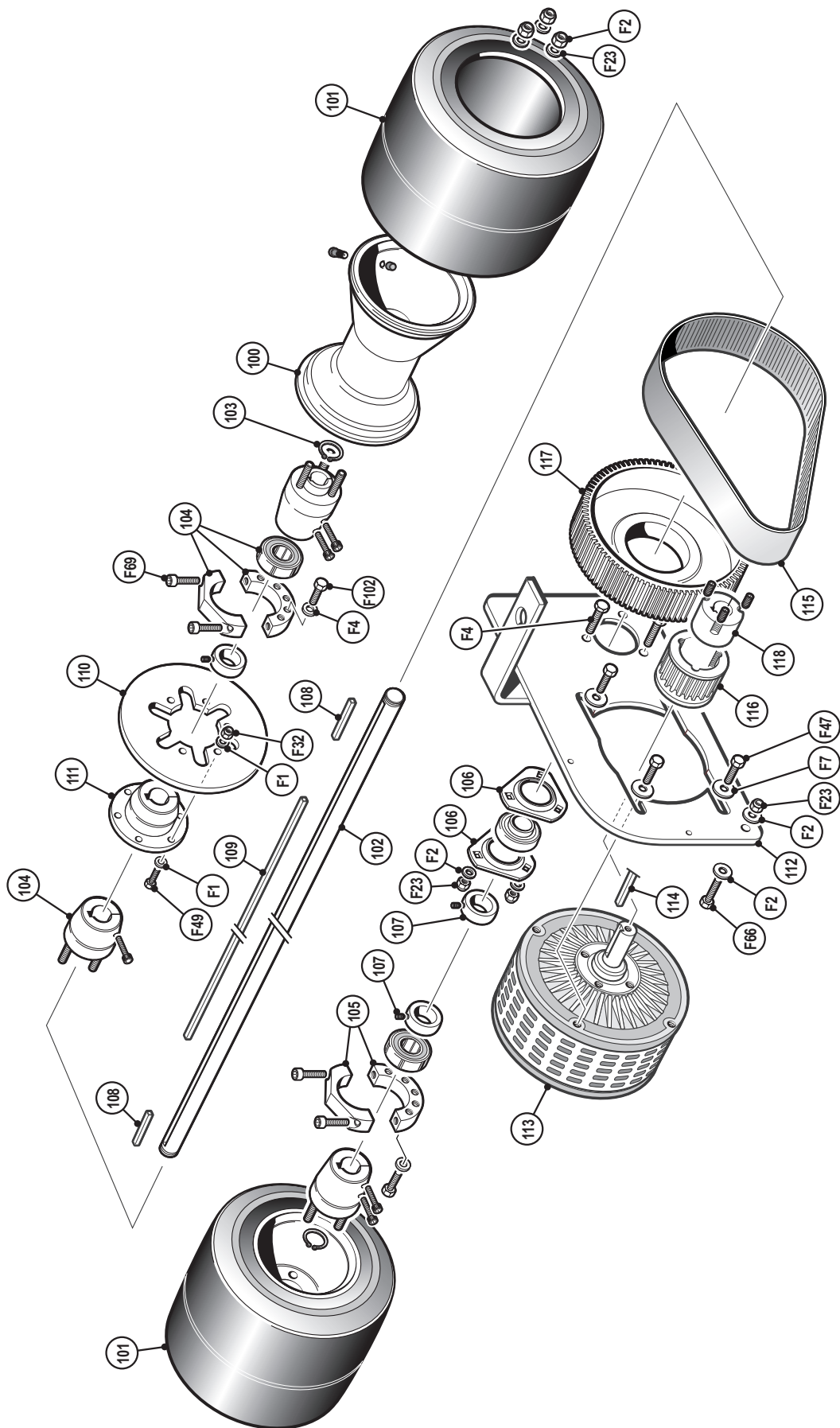
STORM ELECTRIC

| ITEM | PART NO. | DESCRIPTION |
|------|----------|--------------------------------|
| 100 | AS29 | Oke rear wheel rim |
| 101 | AS50 | Rear tyre |
| 102 | AS52 | Rear axle |
| 103 | AS54 | Axle circlips |
| 104 | AS55A | Rear hub twin bolt fixing |
| 105 | AS58 | Alloy bearing hangers |
| 106 | AS59 | Steel bearing hangers |
| 107 | AS61 | Axle seal eccentric collar |
| 108 | AK02 | Rear hub keyway |
| 109 | AK03 | Sprocket keyway |
| 110 | ABS11 | A8mm / 19dmm disc |
| 111 | ABS12 | Disc carrier |
| 112 | AES02 | Asmo motor mount plate |
| 113 | AES03 | Asmo motor |
| 114 | AES03A | Motor keyway |
| 115 | AES13 | 840 x 8 x 30 belt |
| 116 | AES14 | 28t x 8 x 30 front pulley gear |
| 117 | AES15 | 80t x 8 x 30 rear pulley gear |
| 118 | AES16 | Taper bush 19mm x 1210 |

For list of fixings see rear page



STORM ELECTRIC





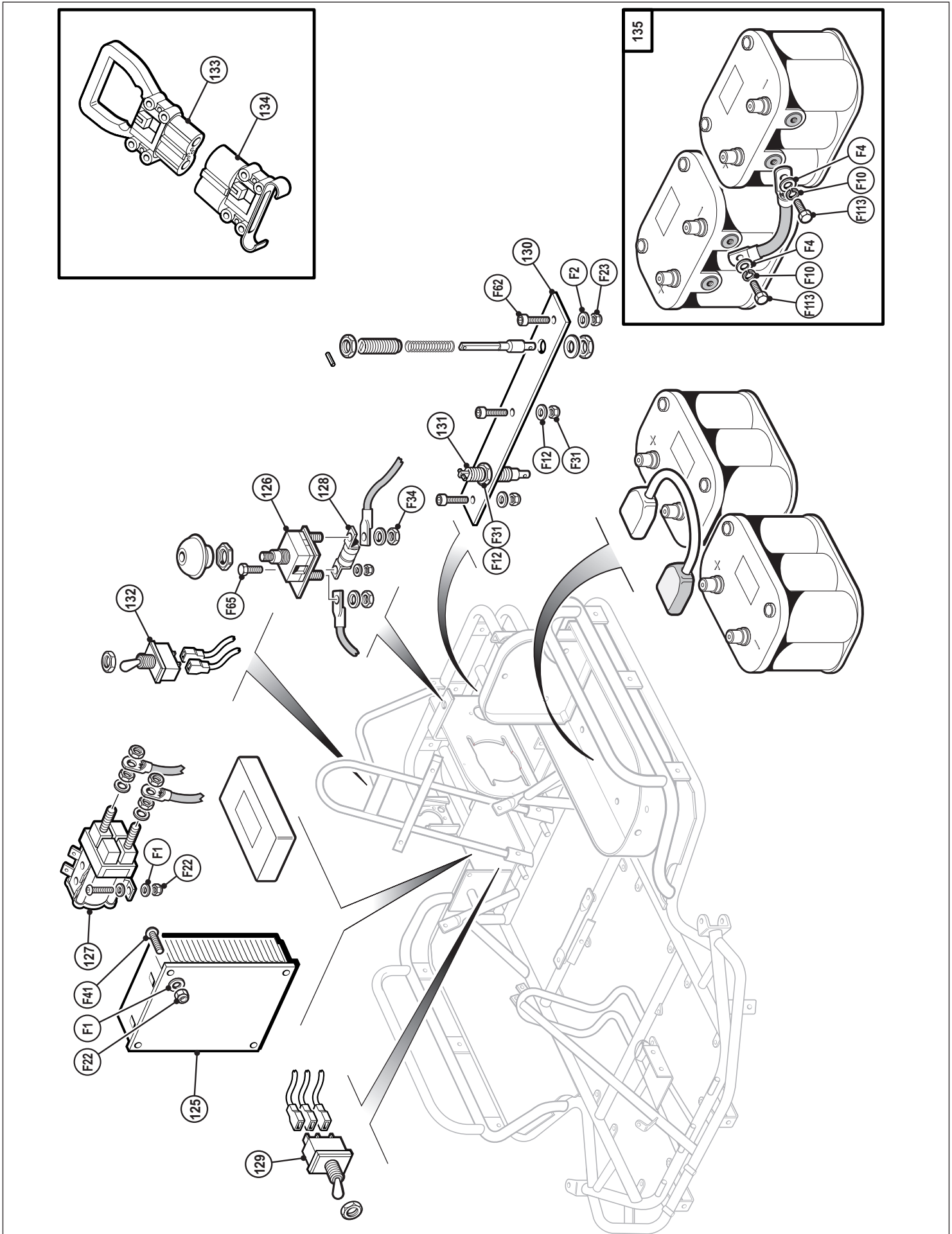
STORM ELECTRIC

| ITEM | PART NO. | DESCRIPTION |
|------|----------|--------------------------|
| 125 | AES04 | Sevcon controller |
| 126 | AES38 | Emergency switch |
| 127 | AES38A | Relay |
| 128 | AES38B | Bussman 125 fuse |
| 129 | AES53 | Reverse switch |
| 130 | AES72 | Charge stck mount |
| 131 | AES73 | Charge sticks |
| 132 | AES92 | On/Off flick switch |
| 133 | AES35 | Rema charge plug charger |
| 134 | AES36 | Rema charge plug kart |
| 135 | AES30 | Battery 12v Gel |

For list of fixings see rear page



STORM ELECTRIC





STORM ELECTRIC

| ITEM | DESCRIPTION |
|------|--|
| F1 | M6 form A washer |
| F2 | M8 form A washer |
| F3 | M8 form B washer |
| F4 | M10 form A washer |
| F5 | M12 Form A washer |
| F6 | M12 Form B washer |
| F7 | M6 penny washer |
| F8 | M8 penny washer |
| F9 | M8 spring washer |
| F10 | M10 spring washer |
| F11 | 3/8 x 1.25 penny (Briggs) |
| F12 | 22mm washer (charge stick/Briggs/barriers) |
| F22 | M6 nyloc |
| F23 | M8 nyloc |
| F24 | M10 nyloc |
| F25 | M12 nyloc |
| F26 | M6 locknut |
| F27 | M8 locknut |
| F28 | M8 locknut Left thread |
| F29 | M10 locknut |
| F30 | M10 locknut Left thread |
| F31 | 22mm locknut |
| F32 | M6 locking nut (brake disc) |
| F33 | 5/16 UNC lock nut (Briggs terminal) |
| F34 | M8 x 24 hexagon long series (Stop button) |
| F41 | M6 x 20 socket button |
| F42 | M6 x 16 socket button |
| F43 | M6 x 30 socket button |
| F44 | M6 x 45 socket button |
| F45 | M6 x 20 socket c/sk |

**ITEM****DESCRIPTION**

| | |
|------------|---|
| F46 | M6 x 25 socket c/sk |
| F47 | M6 x 20 hexagon |
| F48 | M6 x 25 hexagon |
| F49 | M5 x 30 hexagon |
| F50 | M6 x 45 hexagon |
| F62 | M8 x 60 socket button |
| F63 | M8 x 20 socket button |
| F64 | M8 x 25 socket button |
| F65 | M8 x 25 hexagon |
| F66 | M8 x 30 hexagon |
| F67 | M8 x 45 hexagon |
| F68 | M8 x 20 socket caphead |
| F69 | M8 x 25 socket caphead |
| F70 | M8 x 35 socket caphead |
| F71 | M8 x 40 socket caphead |
| F72 | M8 x 45 socket caphead |
| F73 | M8 x 50 socket caphead |
| F74 | M8 x 55 socket caphead |
| F75 | M8 x 60 socket caphead |
| F76 | M8 x 80 socket caphead |
| F77 | M8 x 25 socket c/sk |
| F78 | M8 x 30 socket c/sk |
| F79 | M8 x 40 c/sk |
| F80 | M8 x 45 socket c/sk |
| F81 | M8 x 30 hexagon (turned down head) |
| F90 | M10 x 16 socket caphead |
| F91 | M10 x 30 socket caphead |
| F92 | M10 x 40 socket caphead |
| F93 | M10 x 45 socket caphead |
| F94 | M10 x 50 socket caphead |



| PART NO. | DESCRIPTION |
|-----------------|---|
| F95 | M10 x 60 socket caphead |
| F96 | M10 x 25 socket caphead |
| F97 | 7/16 x 1.5 unf socket caphead (Briggs pulley) |
| F100 | M10 x 35 socket button |
| F101 | M10 x 16 hexagon |
| F102 | M10 x 20 hexagon |
| F103 | M10 x 50 hexagon |
| F104 | M10 x 60 hexagon |
| F105 | M10 x 80 hexagon |
| F109 | M10 x 20 socket c/sk |
| F110 | M10 x 25 socket c/sk |
| F111 | M10 x 30 socket c/sk |
| F112 | 3/8 x 5/8 unc Briggs motor bolts |
| F113 | 3/8 x 5/8 unc battery bolts |
| F117 | M12 x 90 socket caphead |
| F121 | M6 x 8 grubscrew (pot clamp) |
| F124 | M10 x 16 grubscrew |
| F125 | M10 x 20 grub screw |
| F130 | Alloy bush for Briggs motor pulley |
| F131 | M6 plastic c/sk washer |
| F132 | M6 plastic spacer washer |
| F137 | M8 plastic c/sk seat washer |
| F138 | M8 plastic spacer washer |
| F140 | M8 rear bumper T nuts |

For list of fixings see rear page